



[www.thistlebond.com](http://www.thistlebond.com)

## PROJECT PROFILE

**PROJECT:** Shaft Rebuild

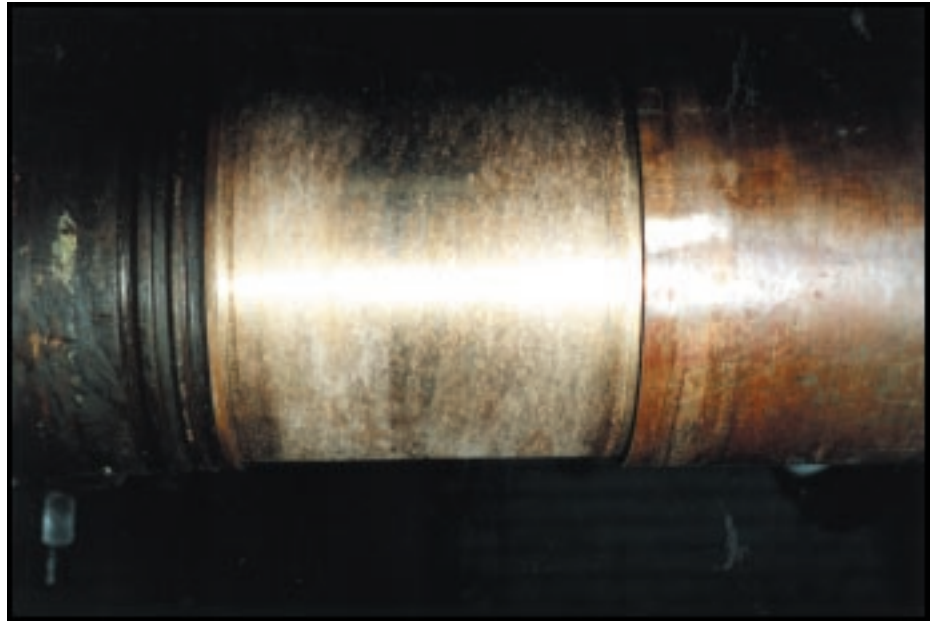
**LOCATION:** South Africa

### THE PROBLEM

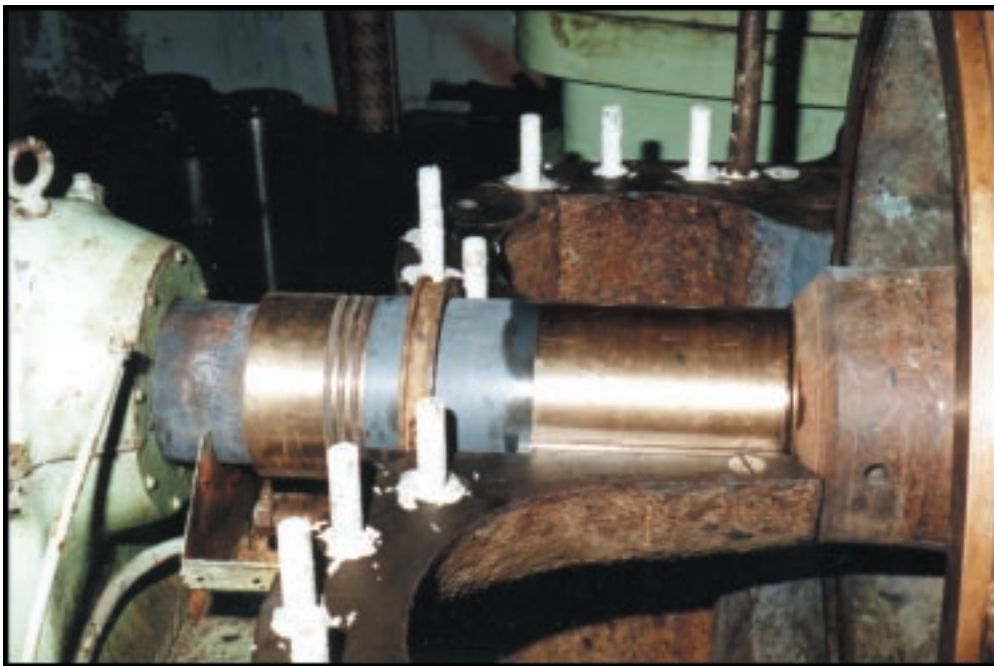
This shaft was first installed in 1944. Until 1997 it had never been repaired.

The main areas of wear were where the water seal ran onto the main shaft which was 400mm in diameter and made of phosphor bronze.

This photograph shows the shaft after being cut back and a profile machined into the cut.



### THE SOLUTION



The worn areas were machined and then a profile was added to the bottom of the cut.

The Super Metal Rebuilding System was then applied and once this had cured it was machined as per ThistleBond technical guidelines.

Other areas of this equipment that had been corroded were rebuilt with our Ceramic Carbide Wearing Compound.